



UE Impact: Penn State Learning Guided Study Groups

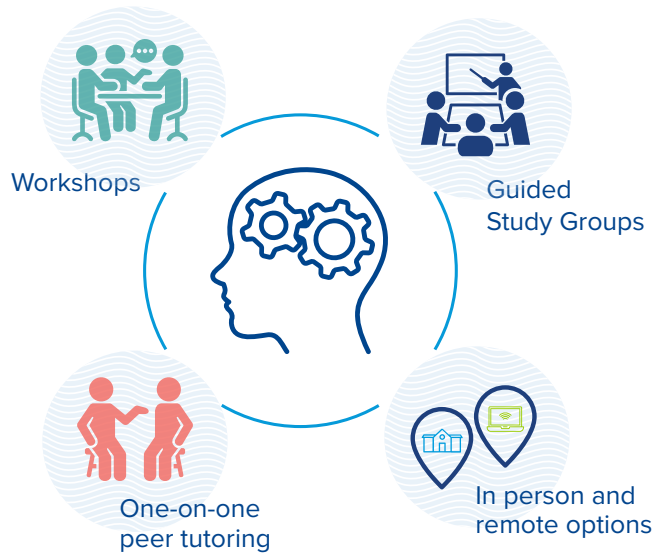
Undergraduate Education's (UE) fourteen units are diverse, yet ultimately work toward the same goal—enhancing teaching, learning, and overall student success. One example of UE's impact on learning is Penn State Learning's Guided Study Group program and its effectiveness in increasing student success within individual courses.

About Penn State Learning

Penn State Learning (PSL) offers free academic study-support programs (costs are covered as part of tuition) with the goal of helping all undergraduates at Penn State meet or exceed the skill standards required to succeed in their academic studies.

Undergraduate Education Units

- Division of Undergraduate Studies
- Morgan Academic Center | Penn State Learning
- Office for General Education
- Student Success Center | Student Engagement Network
- Undergraduate Research and Fellowships Mentoring
- Schreyer Institute for Teaching Excellence
- Sokolov-Miller Family Financial and Life Skills Center
- Center for Penn State Student Entrepreneurship
- Reserve Officers' Training Corps
- Prior Learning Assessment
- Student Orientation and Transition Programs
- Office for Summer Session



50,000+
contacts with students annually

13,422
unique students accessed services in 2022

About Guided Study Groups (GSGs)

GSG's support **21 high-enrollment General Education courses**

math sciences statistics economics

Fall 2022 and spring 2023

1,440 general sessions

157 exam review sessions

In person and remote options

Session recordings available

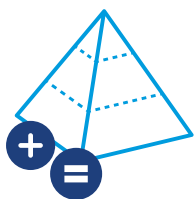
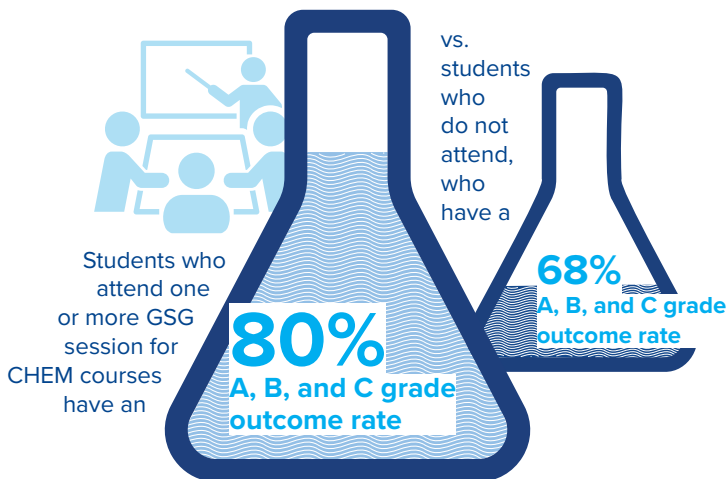
Led by **trained, instructor-supported peer tutors**

who have been successful in the course

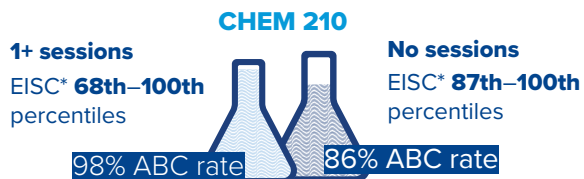
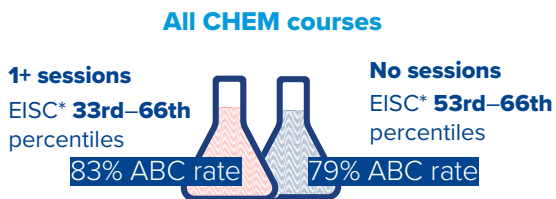
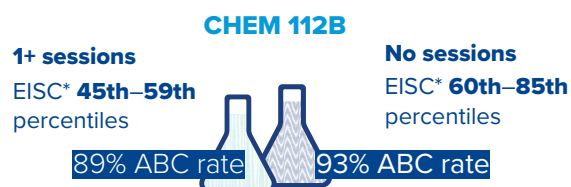
UE's Office of Institutional Research analyzed data from chemistry courses offered during fall 2021 and spring 2022 semesters for this assessment. Data is also available for other subjects.



Using **one or more** PSL Guided Study Group service has a **higher ABC grade outcome rate**, compared to using no GSG service.



Students with lower academic preparation who use one or more GSG services have **ABC rates near or above** students with higher academic preparation who used no services.

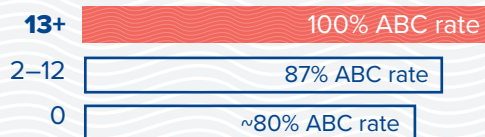


*EISC is Admission Evaluation Index Science, calculated for all Penn State first-year applicants, based on high school grades and, if submitted, SAT/ACT scores.

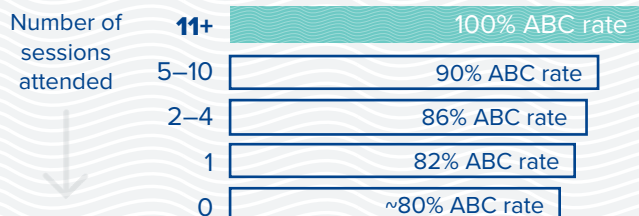


The **more GSG services** a student uses, the **higher the ABC grade outcome rate**.

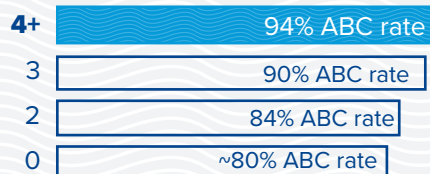
All GSG In-Person Sessions



All GSG Online Sessions



All Exam Reviews



Penn State Learning polls participants every semester to get feedback on GSG general sessions and exam review sessions. The following testimonials from fall 2021 and 2022 student participants show that the GSG programs are helping students.



“It helped explain every concept I had trouble with over the semester in a quick and easy to understand manner that I couldn’t get through the professor or the textbook.”

“Before my first exam, I had never attended a GSG session. When I got my grade back from that first exam I was extremely disappointed and knew I had to change my study habits. From that point on, I attended and reviewed more GSG sessions and my next 2 exam grades increased drastically.”



“The GSG has helped me learn more material than my actual lecture has taught me. It’s nice to go into the GSG with a little understanding and then come out with almost full understanding of what the section was actually about.”



Feedback from GSG alumni, students who have led the GSG sessions for Penn State Learning, shows that they experience benefits as GSG leaders, too, while at Penn State and post-graduation. Student leaders gain important transferable skills in the following areas: critical thinking/needs assessment; leadership and working in teams; and communication.



“The overall benefit of being a GSG leader is that you develop your critical thinking and improve your communication skills among other things. Being a GSG leader helps to shape you in a way that you probably never thought.”



“So generally [in GSG] I went in with a plan about what we would learn and talk about. . . . There were a lot of times . . . we had to change direction as to what they [the students] needed. It’s one of the most important skills I picked up from being a GSG leader, especially now in a corporate environment where I work in what’s called Instant Response. . . . Being able to pivot on the spot.”